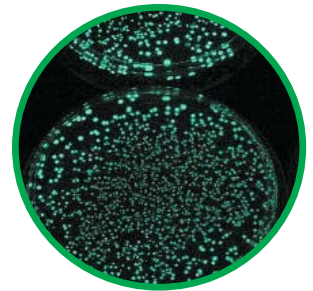


PRODUCT GUIDE 2012

DNA and RNA extraction and purification

&

Electrophoresis Vertical, Horizontal, Blotting, Power Supplies...



News!!

REAL Safe Ref. RBMSAFE

Nucleic acids staining solution used for DNA and RNA detection. Alternative to traditional ethidium bromide (EtBr).

Benefits:

- Non toxic, non mutagenic and non carcinogenic.
- More resolute than EtBr.

USA Distributor Announcement

REAL is proud to announce our partnership with Galen Laboratory Supplies for the distribution of our Molecular Biology kits.

Offers!! 2x1

REAL Pure Spin Ref. RBMEGS01

Designed for genomic DNA extraction from a wide variety of samples (including blood, cultured cells, animal tissue, yeast, forensic samples) using spin columns.

REAL Clean Spin Ref. RBMCS01

3 in 1 Kit, using spin columns for the following applications:

- PCR products purification.
- DNA fragments from agarose gels.
- DNA extraction from solutions.

DNA Isolation Guide

	Product	Sample Volume Sample	When to use	Advantages/ Observations	Isolation Method
Genomic DNA	REALPURE RBMEG01/01EX/02/03	All types of samples: cultured cells, animal tissues, mouse tail, paraffin-embedded tissues, bacteria, yeast, body fluids (saliva, serum,etc), hair, bloodstain.	You can process any sample type, Contact our REAL laboratory for a specific protocol for your sample.	Toxic reagents are not used. The method can be scaled. Rapid and unexpensive.	Buffers Solutions
	REALPURE DNA "SSS" RBME01/02	Blood: 5 µl to 10 ml. Saliva:100 µl to 5 ml. Semen:100 µl to 5 ml.	Largue volumes of whole blood, saliva and semen.	Toxic reagents are not used. The method can be scaled. Rapid and inexpensive.	Buffers Solutions
	REALPURE Plants and Fungi RBMEG04/04EX RBMEG05/05EX	Plants and fungi: 20 mg to 500 mg.	Largue samples of plants and fungi. It contains a PVP solution to remove inhibitors.	Toxic reagents are not used. The method can be scaled. Rapid and inexpensive.	Buffers Solutions
	REALPURE SPIN RBMEGS01/02	All types of samples: cultured cells, animal tissues, mouse tail, paraffin-embedded tissues, bacteria, yeast, body fluids (saliva, serum,etc), hair, bloodstain.	You can process any sample type, the technical service of REAL it can give him the protocol for your sample.	High quality DNA obtained that can be directly used in PCR, Southern, any enzymatic reaction, cloning, etc.	Spin Columns
	REALPURE SPIN Food-Stool RBMEGS05/06	Total DNA from food and stool samples: Up to 200 mg.	Rapid purification of high quality DNA, low amounts of partially degrade DNA can be purified from complex matrices.	Complete removal of PCR inhibitors. Detection of specific DNA in animals, of GMO in food products,DNA isolation from fecal specimens.	Spin Columns
	REALPURE SPIN Food-Stool "Bacteria" RBMEGS03/04	Bacterial DNA: 1.5 ml. of medium culture.	To isolate PCR ready bacterial DNA from pre-enrichment or enrichment cultures from different food samples and stool samples.	PCR and Real Time PCR ready DNA. Complete removal of PCR inhibitors. Includes Proteinase K and Lysozyme.	Spin Columns
Viral DNA/RNA	REALPURE Spin viral DNA/RNA RBMEGS07	200 µl serum, plasma and cell-free biologicals fluids.	For a fast manual simultaneous isolation of viral nucleuids acids.	High quality viral DNA/RNA obtained that can be directly used in PCR or RT-PCR.	Spin Columns
Plasmid DNA	REALPURE miniprep RBMEP01	1.5-3.0 ml culture volume.	Very useful in inserts screenings of recombiants bacteria colonies.	Fast, simple and inexpensive method.	Buffers Solutions
	REALPLASMID SPIN miniprep RBMEPS01/02	1.5-3.0 ml culture volume.	The plasmidic DNA can be used in PCR, restriction analysis, subcloning, transforming and sequencing by capillary electrophoresis.	Toxic reagents are not used. Fast and simple method.	Spin Columns
	Rapid REALPLASMID SPIN midi/maxiprep RBMEPS02	25 - 150 ml culture volume.	The customer chooses the size of the bacteria cultures wich he wants to work.	Toxic reagents are not used. Fast and simple method.	Spin Columns
	HIGH PURITY REALPLASMID Midi/Maxiprep RBMEPS04/05	MIDI (25ml high-copy plasmids / 100ml low-copy plasmids). MAXI (100ml high-copy plasmids / 500ml low-copy plasmids).	To isolate high purity transfection grade plasmid DNA from bacterial cell lysates.	Each kit includes gravity-flow columns and all the necessary reagents for ultrapure plasmid purification. Includes specialized filters to optional remove cellular debris from lysates.	Anion Exchange Columns
DNA Fragments	REAL Clean Matrix RBMCM01	PCR fragments. DNA from agarose gel. DNA concentration.	Fast clean-up of PCR fragments 100 bp to 10 Kb. Gel extraction of DNA fragments 200 pb to 50 Kb. Concentration and salts removal of DNA in solutions.	Organic solvents are not used. Simple and inexpensive method. The protocol is done in 30 minutes.	Silica Matrix

DNA Isolation Guide

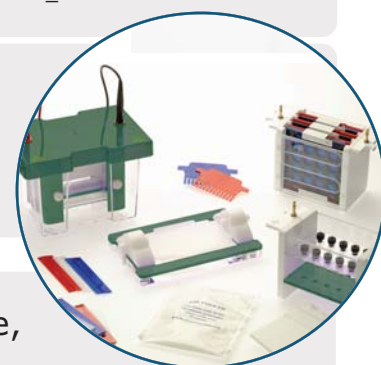
	Product	Sample Volume Sample	When to use	Advantages/ Observations	Isolation Method
DNA Fragments	REAL Clean Spin RBMCS01/02	PCR fragments. DNA from agarose gel. DNA concentration.	Fast clean-up of PCR products 100 bp to 10 Kb. DNA fragments extractio from agarose gel 200 pb to 10 Kb. Concentration and salts removal of DNA in solutions.	Organic solvents are not used. It uses Spin columns, fast and rapid method. The protocol is done in 10 minutes.	Spin Column
	REAL Clean Spin RBMCS03	PCR fragments.	Fast clean-up of PCR fragments 100 bp to 10 Kb.	Organic solvents are not used. It uses Spin columns, fast and rapid method. The protocol is done in 10 minutes.	Spin Column
	REALSPIN DTR RBMS01/01XL	Sequencing reactions: 10 - 75 µl.	Remove dideoxy terminators and not incorporated dye-labelled nucleotides from sequencing reactions, previous to analysis in automatic sequencers.	Prehydrated matrix ready to use.	Spin Column
DNA High Throughput	REALPURE Spin 96 Genomic DNA RBMEA02/03	Animal tissue: 20 mg. Mouse Tail: 20 mg. Culture cells: up to 5x 10 ⁶ . Blood: 200 µl. Body fluids: 200 µl.	96-well microplate format for a fast and simple preparation of genomic DNA from different samples.	Manual or completely automated processing in liquid handling systems.	Spin Column
	REALPURE Spin Animal Blood 384 RBMEA01	Blood: 20 µl.	For a fast manual or automation genomic DNA isolation from animal whole blood using 384 well microplates.	Each kit includes the reagents to process six 384-well microplates (not includes in the kit) around 2304 samples.	Spin Column
	REALTURBO 96 Microplate RBMTL01/02	PCR fragments.	96-well microplate format for a fast and efficient contaminants removal from the PCR products.	Allows process from 1 to 96 samples. Flexible method, the protocol can be done manually with a vacuum system or a centrifuge for microplates, or automatically in liquid handling robots.	Ultrafiltration Membrane
Genomic DNA Amplification	REALPURE TURBO Tissues and cells RBMET01	Animal tissue, mouse tail, cultured cells and hair shaft.	It allows a fast extraction of PCR ready genomic DNA in just 15 minutes.	It includes all necessary reagents for doing the whole process, even a ready to use HOT STAR polymerase.	Buffers Solutions
	REALPURE TURBO Bucal cells RBMET02	Bucal Cells.	Easy and economical method for collecting and preparing PCR ready genomic DNA.	It includes all necessary reagents for the sample collection and transport (buccal swab), the DNA isolation and the amplification reaction (HOT STAR Polymerase).	Buffers Solutions
	REALPURE TURBO Blood RBMET03	Blood: 5 µl. Stain blood. Semen: 5 µl.	It allows a fast extraction of PCR ready genomic DNA in just 5 minutes.	It includes all necessary reagents for doing the whole process, even a ready to use HOT STAR polymerase.	Buffers Solutions
Reagents	REALStock RBMES01/02	Animal tissue samples, cultured cells and bacteria.	Protects and stabilizes the genomic DNA for its following extraction.	Avoids the need of having to process the samples immediately. It is an alternative to the use of paraffin.	
	DNA REMOVE RD055	It is a detergent mixture to remove DNA and RNA from working surfaces.	It degrades contaminant DNA and RNA at PCR sensivity levels.	it works by contact and it is supplied with an applicator to be vaporized.	
	RNase REMOVE RD056	It removes RNases contamination from glass and plastic material surfaces.	It degrades contaminant DNA and RNA at PCR sensivity levels.	It degrades contaminant DNA and RNA at PCR sensivity levels.	
	NUCLEASE FREE WATER RD057/RD058	Water for Molecular Biology applications.	Water for PCR and DNA/RNA isolation.	It is deionized, autoclavated, filtered and non-treated with DEPC.	
	REALSAFE RBMSAFE	Nucleic acids staining solution.	Used for DNA and RNA detection.	Non mutagenic, non carcinogenic. More resolutive than ethium bromide.	
	REALWEST RBMWEST	Western Blot Detection.	Detection of immobilized specific antigens through horseradish peroxidase labeled antibodies.	Just spray on the membrane. No need to mix A&B solutions.	

RNA Isolation Guide

	Product	Sample Volume Sample	When to use	Advantages/ Observations	Isolation Method
Total RNA	REALTOTAL RNA Tissues and Cells RBMER01	Tissues: 5 to 100 mg. Cells: 100 to 10x10 ⁶ .	The method can be scaled. Rapid and non-expensive.	Toxic reagents are not used.	Buffers Solutions
	REALTOTAL RNA Tissues and Cells "STAR" RBMER02	Tissues: 5 to 100 mg. Cells: 100 to 10x10 ⁶ .	Specially designed for RT-PCR. Includes all the necessary reagents to remove contaminat DNA.	Toxic reagents are not used.	Buffers Solutions
	REALTOTAL RNA SPIN PLUS RBMER11	Biological fluids (serum, plasma, saliva, etc), bacteria, yeast, paraffin-embedded tissue and reactions cleaning.	High quality RNA is obtained. DNA-free total RNA .	Total RNA prepared can be used in applications such as RT-PCR, Northern, primer extension, array technology and Rnase protection.	Spin Column
	REALTOTAL RNA Bacteria and Yeast RBMER03	Bacteria: 1 ml ; 10 ⁹ . Yeast: 1ml ; 10 ⁷ .	Rapid and non-expensive.	Toxic reagents are not used.	Buffers Solutions
	REALTOTAL RNA Bacteria Yeast "STAR" RBMER04	Bacteria: 1 ml ; 10 ⁹ . Yeast: 1ml ; 10 ⁷ .	Specially designed for RT-PCR. Includes all the necessary reagents to remove contaminant DNA.	Toxic reagents are not used.	Buffers Solutions
	REALTOTAL RNA SPIN BLOOD RBMER12	Blood: 300 µl.	High quality RNA is obtained. DNA-free total RNA .	It contains a Stabilizing Solution wich allows a safe transport from the collecting place to the laboratory.	Spin Column
	REALTOTAL RNA SPIN Plants and Fungi RBMER13	Plants and Fungi: <100 mg.	High quality RNA is obtained. DNA-free total RNA .	It contains a PVP solution to remove carbohydrates and polyphenols and 2 differents Lysis Solutions.	Spin Column
	REALPURE SPIN DNA/RNA Kit RBMER16	Cultured animal cells, tissue samples, blood, bacteria, yeast, fungi, biologicals fluids and plants.	Rapid method for the isolation and purification genomic DNA and total RNA simultaneously from a single sample.	Analysis will be more reliable since the RNA and DNA are derived from the sam sample. The kit purifies all sizes of RNA, from large mRNA and ribosomal RNA down to microRNA and small interfering RNA.	Spin Column
	ARNzol Kit RBMER15	Cultured animal cells, tissue samples, blood, bacteria, yeast, fungi, biologicals fluids and plants.	The kit purifies all sizes of RNA, from large mRNA and ribosomal RNA down to microRNA (miRNA) and small interfering RNA (siRNA).	Rapid and very economical method. Do not eliminate the genomic DNA.	Spin Column
	REALSTAR RBMER10	Total RNA from all types of samples.	To remove contaminant DNA from RNA samples and for removing the DNase after the treatment.	Fast and easy method. The DNase removal step takes place in just 3 minutes.	Buffers Solutions
Micro RNA	REALTOTAL MicroRNA Kit RBMER14	Cultured animal cells, tissue samples, blood, bacteria, yeast, fungi, biologicals fluids and plants.	Rapid and efficient method for the isolation and purification of small RNA molecules (<200 nt). These small RNAs include regulatory RNA molecules such as microRNA (miRNA) and short interfering RNA (siRNA).	Most commercial RNA purification kits do not recover RNA molecules smaller than < 200 nucleotides, using an approach consisting of two sequential filtrations with different ethanol concentrations, an RNA fraction highly enriched in RNA species < 200 nucleotides can be obtained .	Spin Column

Electrophoresis PRODUCTS

	Product	Description	Reference
Molecular W. markers	Scale N° 1 and Scale n° 2.		RBMM1/RBMM2
	Markers Lambda DNA Digested: Marker n° 3 - Marker n° 4 - Marker N°7 - Marker N° 8.		RBMM3/RBMM4/RBMM7/RBMM8
	Marker V5 and Marker V6.		RV05/RV06
Consumables	Agarose gels.		See ref. in our website
	Concentrated Buffers.		See ref. in our website
	PCR Plastic Tubes.		See ref. in our website
Horizontal Electrophoresis	RealSub Mini.	Three tray options 7x7cm, 7x10cm and Duo.	RELSMINI - 7/10/DUO
	RealSub Midi.	Three tray options 10x7cm, 10x10cm and Duo.	RELSMIDI - 7/10/DUO
	RealSub Plus.	Wide tray range: 15x7, 15x10, 15x15cm and Trio.	RELSPLUS - 7/10/15/TRIO
	RealSub Maxi.	Resolution of high number of samples.	REALSMAXI - 20/10/DUO/25
	RealSub Screen.	Rapid Screening of large number of samples.	REALSSCREEN - 32/24/16/TRIO
	Mini Fast.	Completely self contained system for quick check of samples.	RELFMMS10
	Comet.	Single Cell Gel Electrophoresis.	REL-COM - 10/20/40/80
Vertical Electrophoresis	Cellulose-Acetate System.	For use in diagnostic tests.	REL-CELLAS
	RealPage Mini.	Preferred unit for routine protein mini-electrophoresis.	REL- VS10DSYS/CVS10DSYS
	RealPage Mini Wide.	20cm Width, for those with >20 samples to compare.	RELVS - 10WD/10WDSYS
	RealPage Maxi.	Up to 300 samples per run.	RELVS -20/30 -D/DSYS
	RealPage Modular Systems.	For multiple electr. techniques (10x10, 10x20 & 20x20 cm).	
Blotting Units	FlatBed IEF System.	Full range of IEF flat bed techniques. Inc. enhanced cooling.	
	Electroblotting Modular Systems.	Complete Mini/Wide/Maxi gel casting running and electroblotting systems.	REL -VS10CBS/CVS10CBS
	STAND Electroblotters.	Up to 5 gel blot cassettes used at any one time.	RELEBM -10/20
	Capillary Blotting.	Side by side transfer of multiple gels in a single set up.	REL_ -CAPL/CAPS
	Semi Dry Blotters.	For Western, Southern or Northern blotting.	RELSD -10/20/33/50
Power Supplies	Dot and Slot Blotters.	Clone/Immunological screening in Southern/Northern/Western.	REL -D48/D96/S24/S48
	Large Format Vertical.	Enhanced gel resolution and easy to use.	RELQ -20/33
	Real Mini.	Ultra compact power supplies with dual outlets.	RELMINI -150/30
Gel Drying	Real Midi.	Ideal for routine horizontal and mini vertical electrophoresis.	REL -250/300
	Real Maxi.	Programmable, high performance, easy to operate supplies.	REL -500/3AP
Accessories	Midi/Maxi Gel Dryer.	21 x 31cm and 35 x 45cm drying areas.	REL_GDVH / REL_GDVH35
	GelMaster Vacuum Pump.	Vapour trap + High efficiency diaphragm pump.	REL_GDPUMP
Accessories	Gel Levelling Table.	Useful way to pouring gels of uniform thickness.	
	Buffer Save Blocks.	Reduce the volume in positive and negative compartments.	
	Combi-comb/loading guides.	Combine the convenient comb with the appropriate guide.	
	Gel Platform and CoolPack.	Unique. Cool the chambers without external chilling.	
	Extensive range of combs.	Full range of combs with four thicknesses and colour coded.	



If you have any questions about the products in the catalogue, please contact us at support@reallaboratory.com

You can also visit our website www.reallaboratory.com for further information.



Registered Trade mark of Durviz, S.L.



Parque Tecnológico de Paterna
Leonardo da Vinci, 10
46980 Paterna
Valencia - Spain
Tel: +34 96 136 61 07
Fax: +34 96 136 61 68
Email: durviz@durviz.com
Valencia - Madrid - Barcelona - Granada -
Bilbao - La Coruña

DISTRIBUTED BY

RBMG102011